

Engineering, Testing & Manufacturing Services



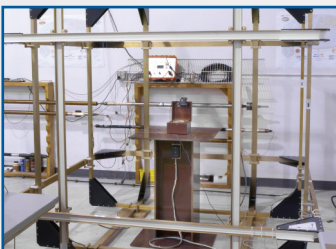
HALT / HASS Chambers



Electrodynamic Shaker Table / Oven



Flow Loop, Exterior



Helmholtz Coil

Support Services

Quality Inspection

- > 8-ft, 6-axis FARO Platinum Portable CMM
- > 4 x 8 ft Starrett Surface Plate
- > 14 in. Mitutoyo Optical Comparator
- > 0.098 x 48 in. Fiber Optic Boroscope
- > Gage block sets; plus/minus pin sets, bore gages, height indicators
- > Standard metric, Acme and API thread gages
- > Wilson Rockwell hardness tester

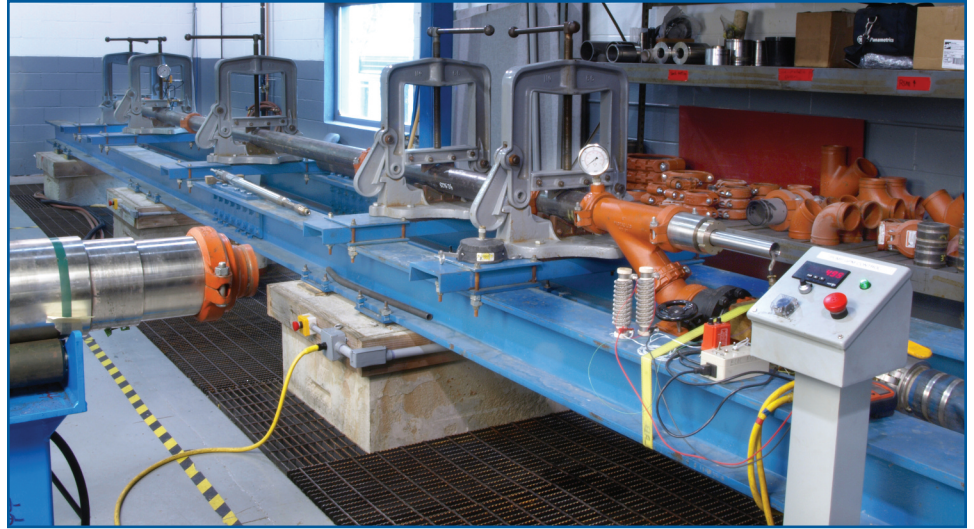
Testing

- > Vertical test facility
- > 750 gpm, 1,000 psi flow loop: Caterpillar 3412 850 hp engine; National Oilwell 7P50 Triplex pump
- > Pressure testing to 27,500 psi to 200° C
- > Non-magnetic D&I sensor calibration facility and Helmholtz coil
- > Electrodynamic shaker table / oven
- > HALT / HASS chambers
- > 200° C non-conductive sub oven
- > Resistivity test tank
- > Strain gauge instrumentation, load testing
- > Torsional, axial and lateral strain calibration
- > Shock testing to 1,000 g
- > Lateral and torsional (stick-slip) testing of sensor assemblies
- > Bending and rotating fatigue testing of drill string components
- > Dynamometer testing to 8,000 rpm, 70 HP
- > Fatigue life testing
- > Ultrasonic and LPI inspection
- > Helium leak and vacuum testing

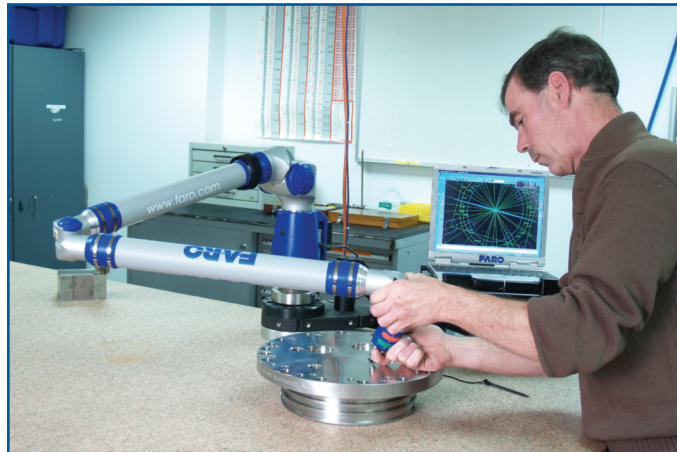


Global perspective. Independent thinking.

Support Services



*Above:
Flow Loop, Interior*



*Left:
FARO Portable CMM*

Headquarters ♦ Wallingford ♦ USA

7 Laser Lane, Wallingford, CT 06492 USA
Phone: 860-613-4450 ♦ Fax: 203-284-7428
contact@aps-tech.com

Houston ♦ USA

15415 International Plaza Dr., Suite #150
Houston, TX 77032 USA
Phone: 281-847-3700

Rev. 131030-vB.02

Specifications subject to change without notice.

© APS Technology, Inc. 2013

